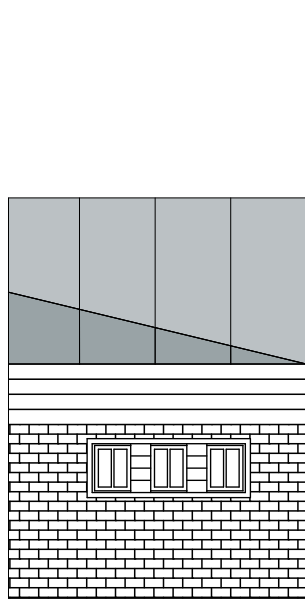


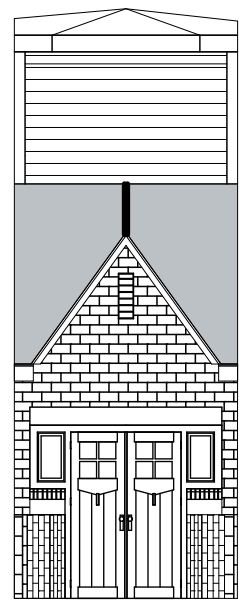
Gevel 8



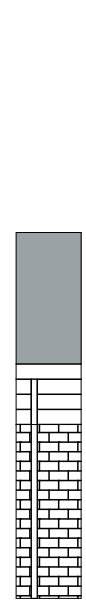
Gevel 9



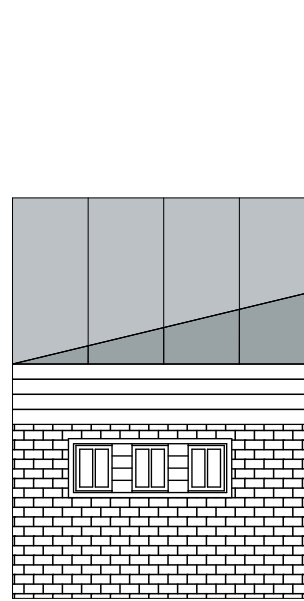
Gevel 10



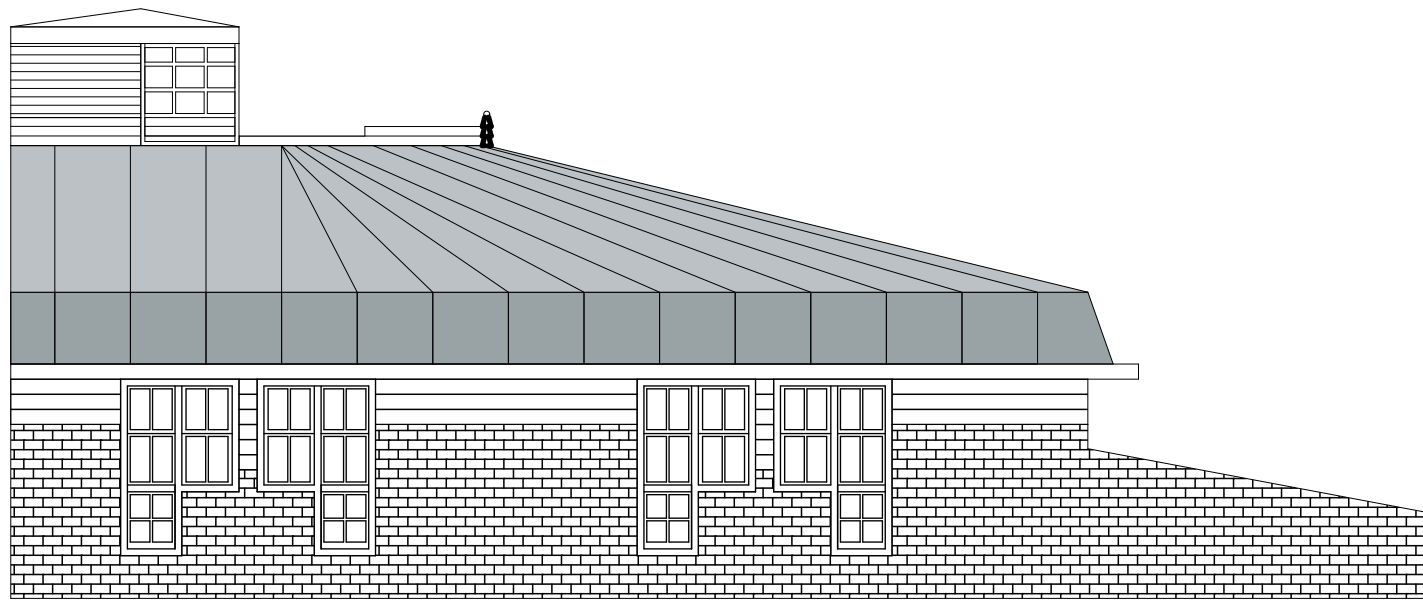
Gevel 11



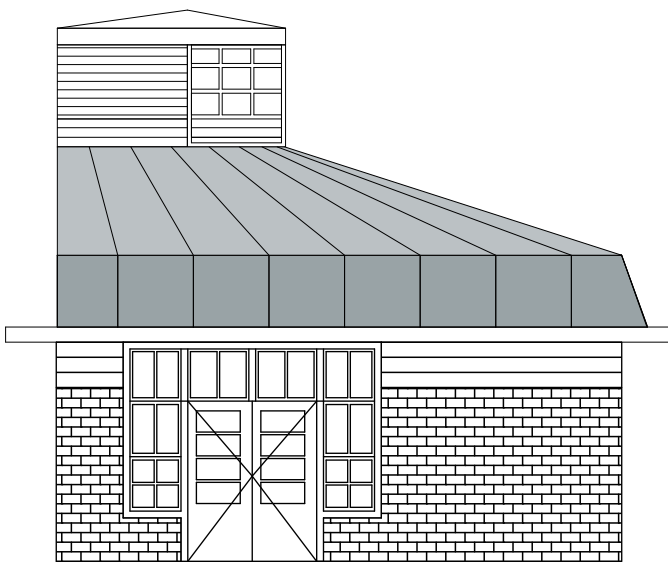
Gevel 12



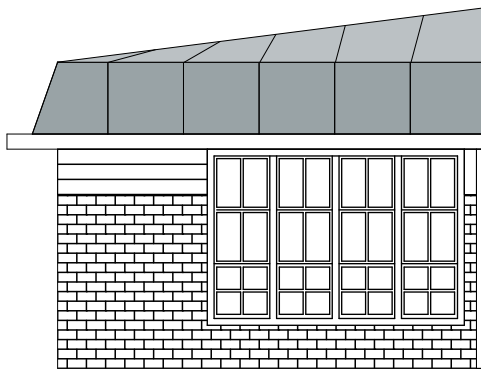
Gevel 13



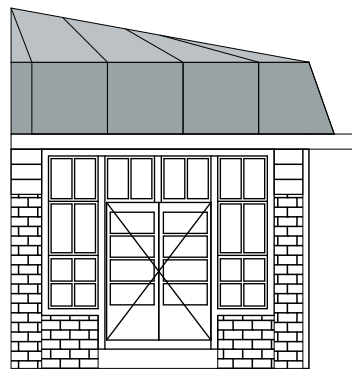
Gevel 14



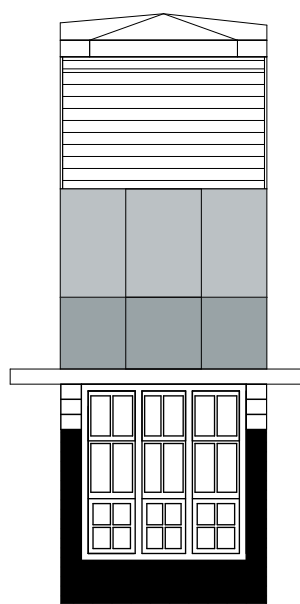
Gevel 1



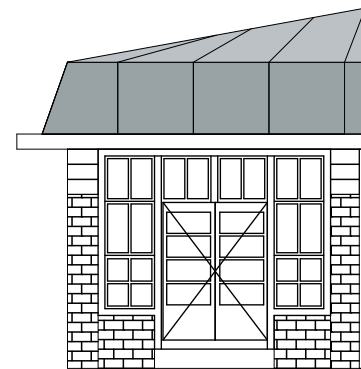
Gevel 2



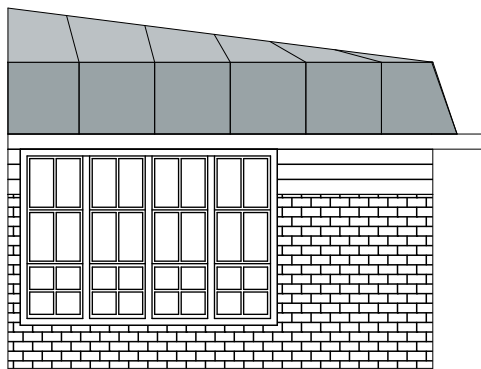
Gevel 3



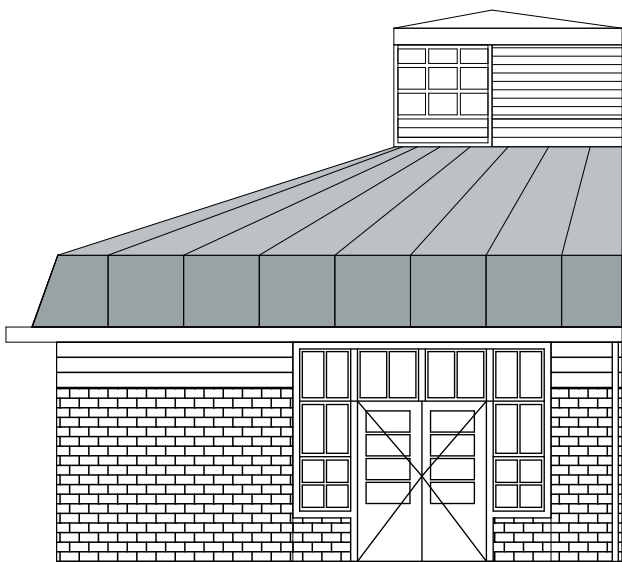
Gevel 4



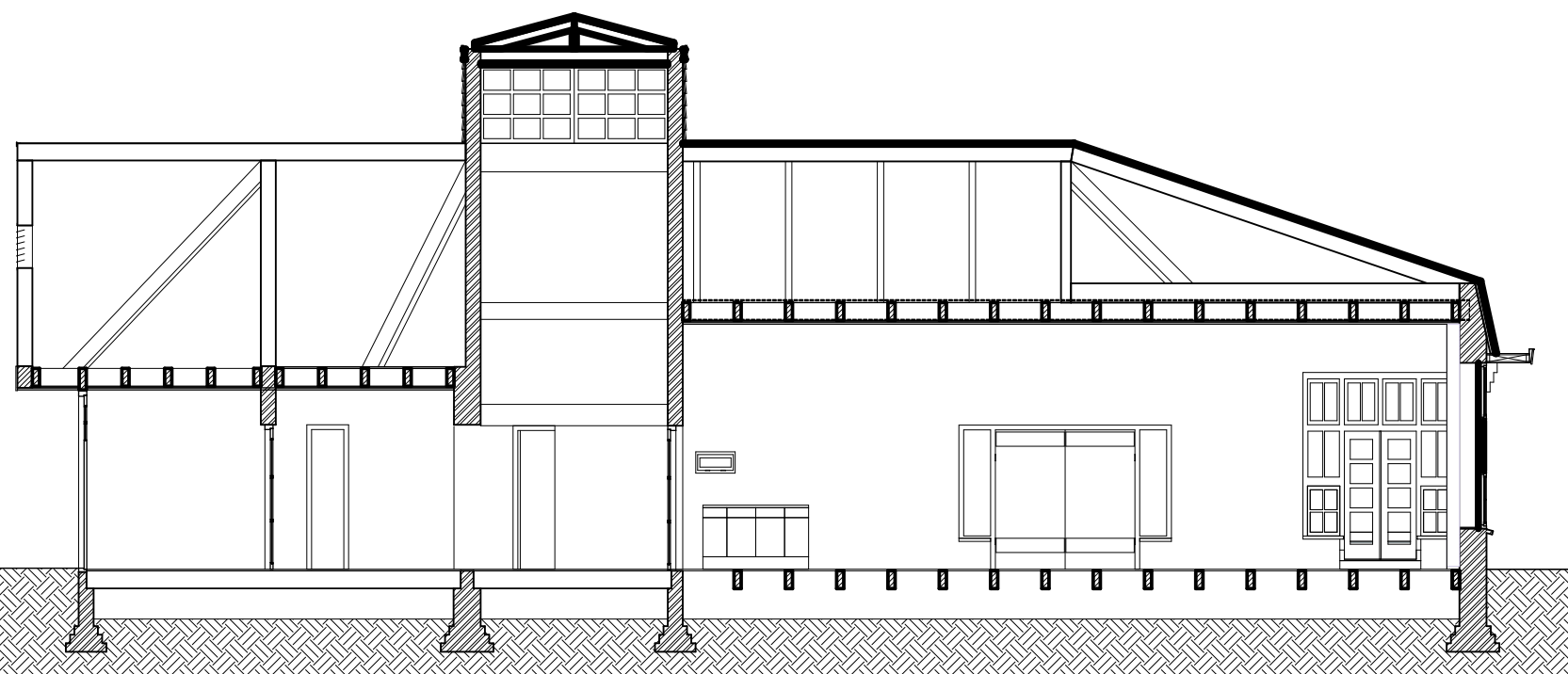
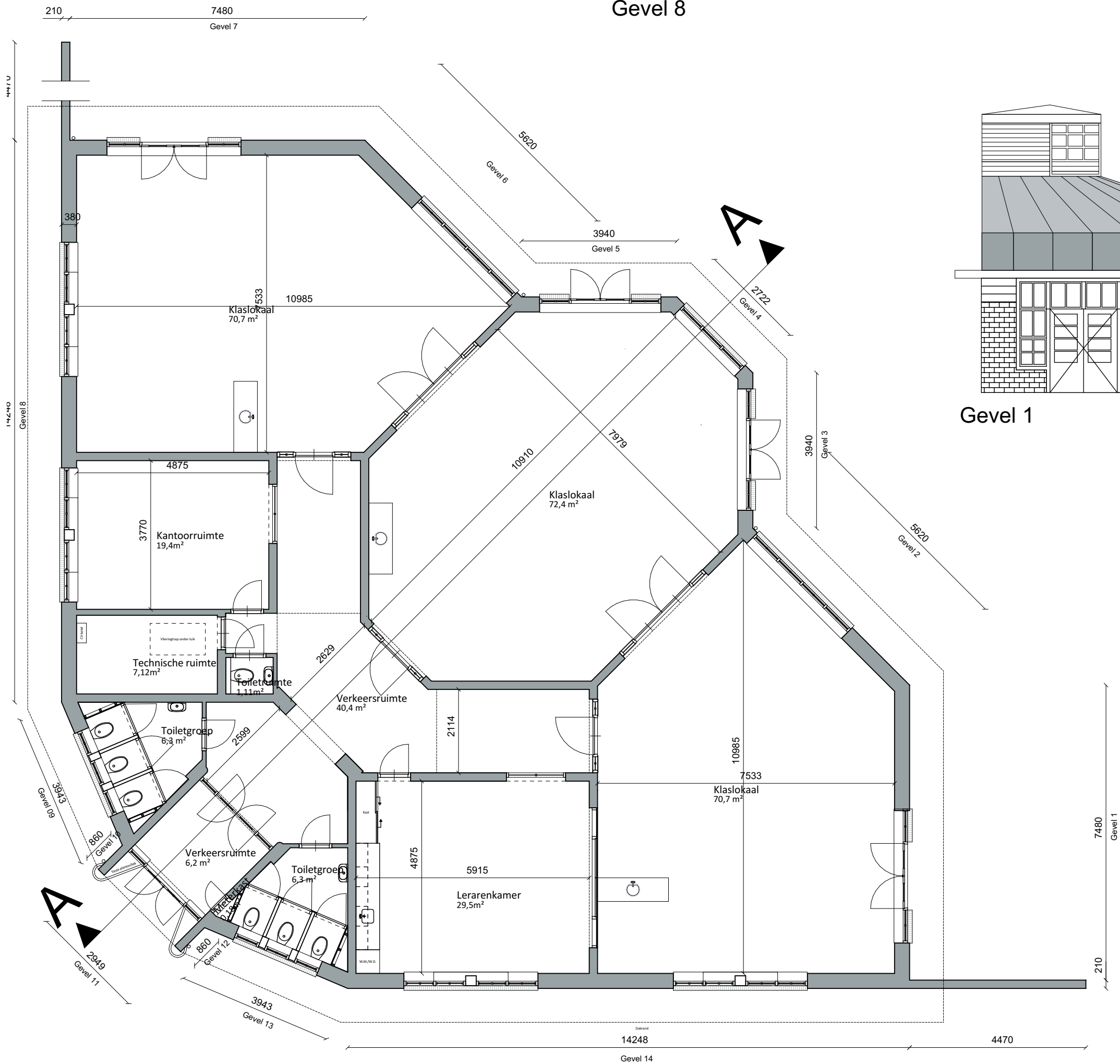
Gevel 5



Gevel 6



Gevel 7



Doorsnede A-A

opdrachtgever  
De Haarlemse Montessorischool  
Louise de Colignylaan 3 Haarlem

project  
De Haarlemse Montessorischool  
revitalisatie gebouwen  
Louise de Colignylaan en de Churchillaan

fase  
Dependence bestaand

onderdeel  
Verzamelblad

schaal 1:100	formaat 804x420	getekend RH	ontwerp DJ	blad DEP-N1002
datum 15-09-2023				
datum wijziging				
A:	F:			
B:	G:			
C:	H:			
D:	I:			
E:	J:			
				projectnr. 22039

**MA·KR**  
Maas Kristinsson Architecten

1 <sup>e</sup> Et 1 7241 AK Lochem +31 (0)573 222 180	Henriëtte van Lijndenlaan 1 3703 AS Zeist +31 (0)30 2080 877
---	--

info@ma-kr.nl	www.ma-kr.nl
---------------	--------------

Plattegrond